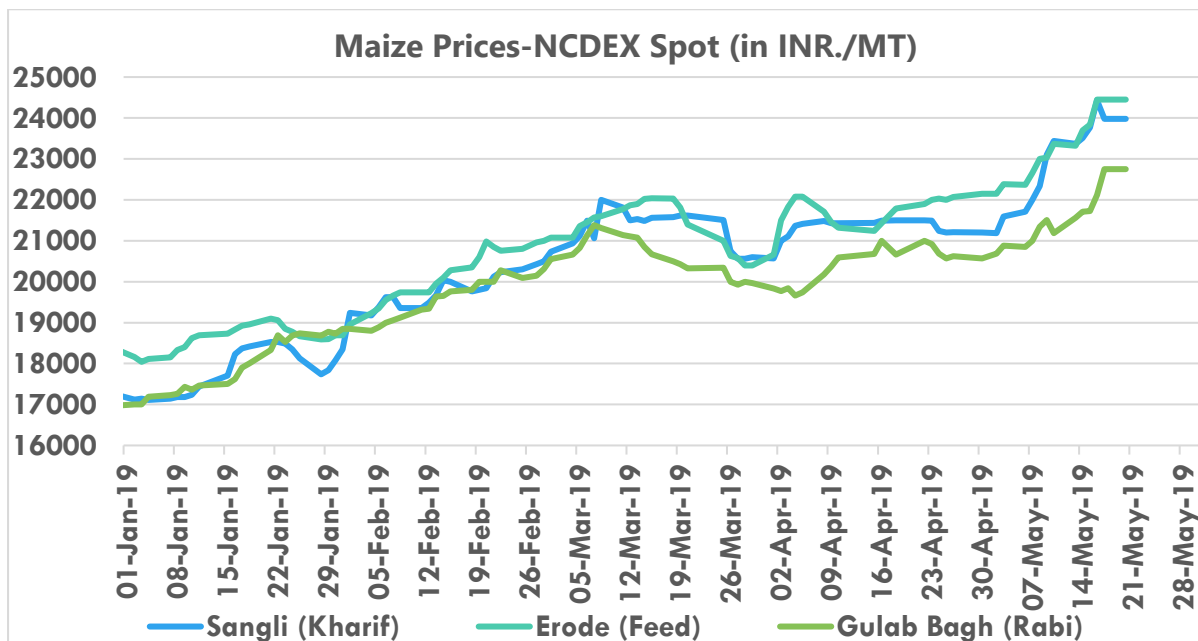




RAW Material

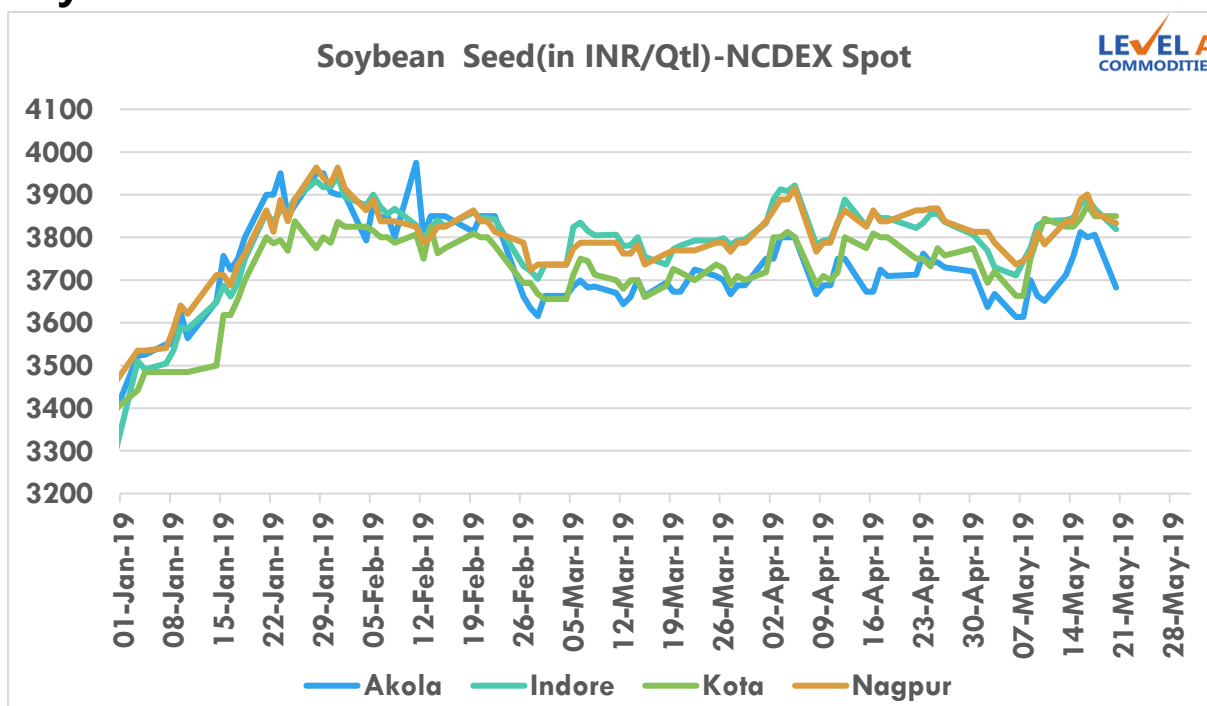
Maize



Maize Prices-NCDEX Spot (in Rs./MT)

Location	20-May-19	13-May-19
Sangli (Kharif)	23760	22800
Erode (Feed)	23610	22990
Gulab Bagh (Rabi)	18470	17920

Soybean



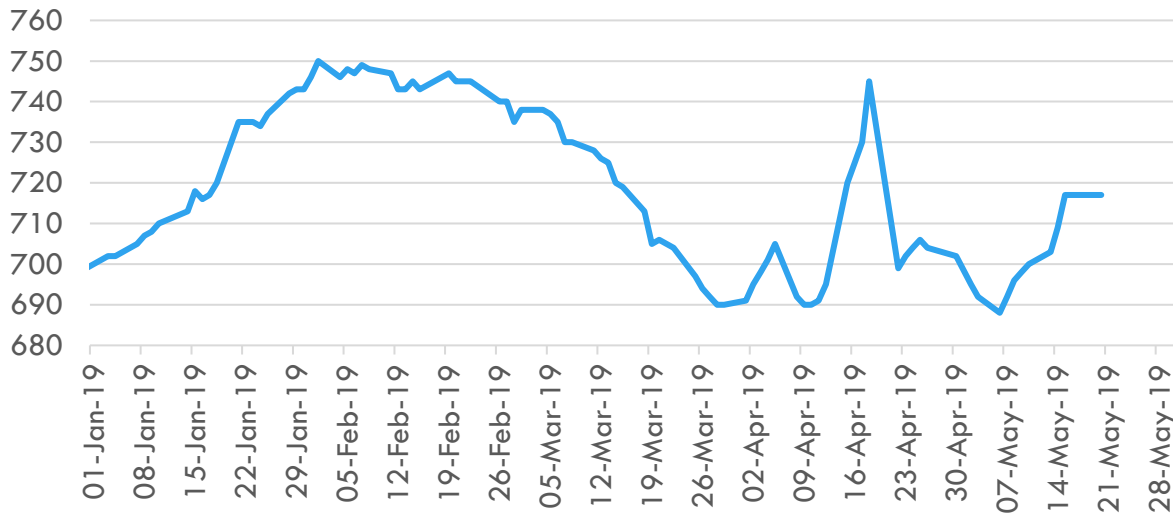


CLFMA Weekly Market Watch

Monday, 20 May 2019

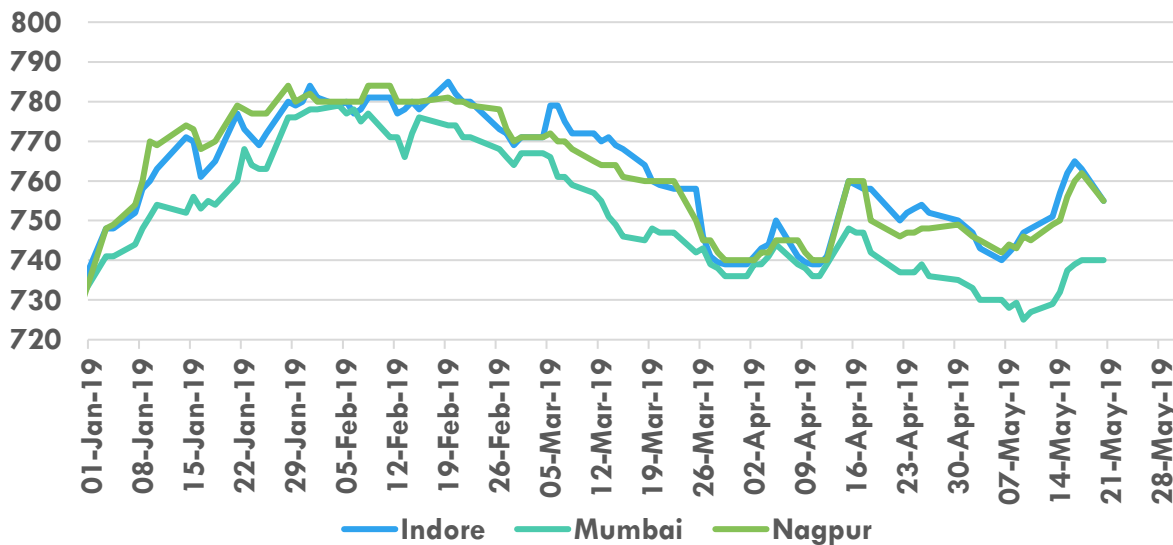
Degummed Soy oil (in INR/10kg) at Kandla-NCDEX Spot

LEVEL A
COMMODITIES



Ref Soya Oil (in INR/10kg)-NCDEX Spot

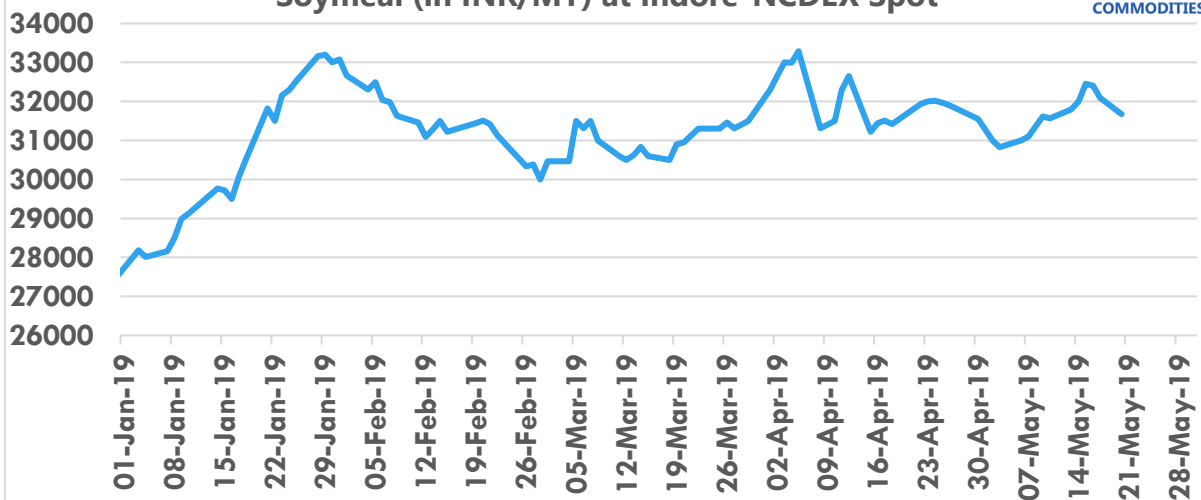
LEVEL A
COMMODITIES



Soymeal

Soymeal (in INR/MT) at Indore-NCDEX Spot

LEVEL A
COMMODITIES





CLFMA Weekly Market Watch

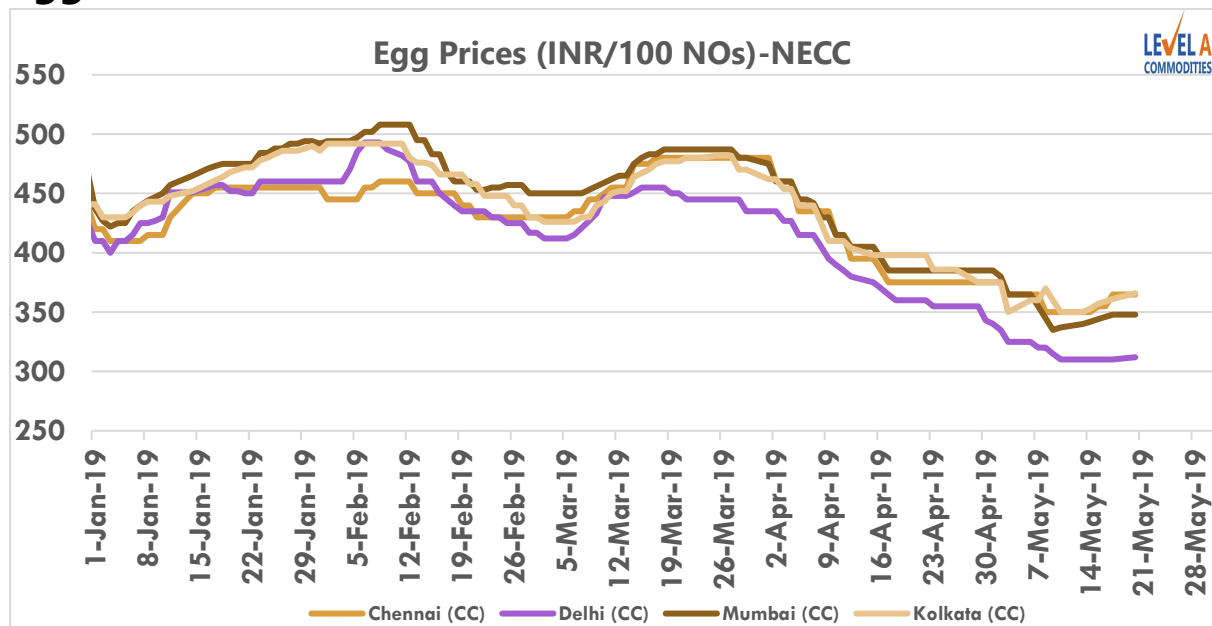
Monday, 20 May 2019

Soybean Complex Prices-NCDEX Spot

Commodity (Unit)	Location	20-May-19	13-May-19
Degummed Soy oil (in INR/10kg)	Kandla	717	703
Ref Soya Oil (in INR/10kg)	Indore	755	751
	Mumbai	740	729
	Nagpur	755	749
Soybean Seed(in INR/Qtl)	Akola	3683	3663
	Indore	3819	3841
	Kota	3850	3825
	Nagpur	3833	3838
Soymeal (in INR/MT)	Indore	31669	31500

Output

Eggs



Egg Prices (Rs/100 NOs)-NECC

Name Of Zone	20-May-19	13-May-19
NECC Prices		
Ahmedabad	361	350
Ajmer	-	-
Banglore (CC)	370	385
Chennai (CC)	410	435
Chittoor	403	428
cochin	315	290
Delhi (CC)	305	300

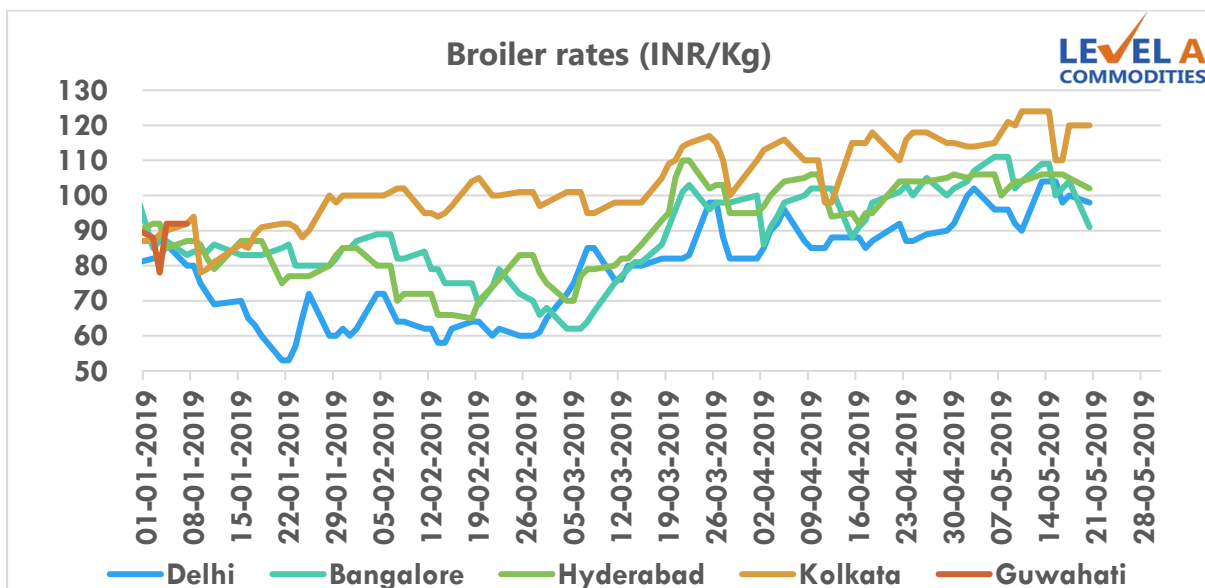


CLFMA Weekly Market Watch

Monday, 20 May 2019

E.Godavari	323	315
Hyderabad	322	-
Miraj	-	-
Mumbai (CC)	371	400
Mysore	-	-
Nagapur	323	-
Namakkal	-	-
Pune	362	385
Punjab	-	-
Vijayawada	323	315
Vizag	325	315
W.Godavari	323	315
Warangal	322	328
Prevailing Prices		
Allahabad (CC)	343	348
Barwala	-	-
Bhopal	320	325
Hospet	335	350
Jabalpur	334	325
Kanpur (CC)	324	324
Kolkata (CC)	360	360
Luknow (CC)	333	353
Raipur	339	350
Varanasi (CC)	350	343

Broilers





CLFMA Weekly Market Watch

Monday, 20 May 2019

Broiler rates (Rs/Kg)

Location	20-May-19	13-May-19
Delhi	98	104
Punjab	96	90
Raipur	98	102
Pune	98	108
Bangalore	91	109
Hyderabad	102	106
Gujarat	96	102
Kolkata	120	124
Lucknow	98	96
Guwahati	-	-

Day Old Chicks Price (Rs/Unit)

Location	20-May-19	13-May-19
Punjab	41	39
Chandigarh	41	39
Haryana	41	39
Himachal Pradesh	42	40
Rajasthan	42	40
Jammu & Kashmir	42	40
Uttarakhand	42	41
Uttar Pradesh	48	47
Madhya Pradesh	48	47
Chhattisgarh	48	47
Bihar	48	47
Jharkhand	48	47